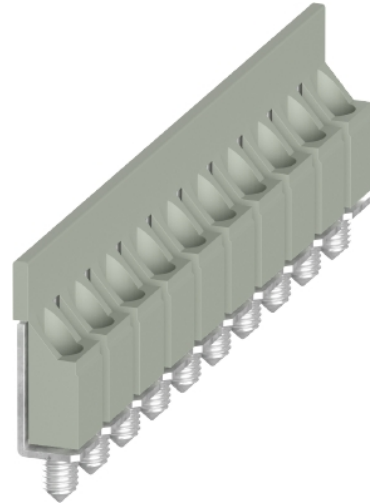


## Data sheet

Commercial Art.No.: 0D.S18.4027.0

jumper bar IVB WTN 16-10 S

jumper bar IVB WTN 16-10 S modular spacing 12 mm, insulated yes, number of poles 10, color grey, mounting method pluggable, inflammability class of insulation material acc. with ul94 V0



Commercial Art.No.	0D.S18.4027.0
EAN	4049088723858
Order Unit	100

## Technical data

### general

color	grey
inflammability class of insulation material acc. with UL94	V0
modular spacing	12 mm
number of bridged clamps	10
mounting method	pluggable
insulated	yes
model	cross connector

### classification

ETIM 9.0	EC000489
----------	----------

### product compliance

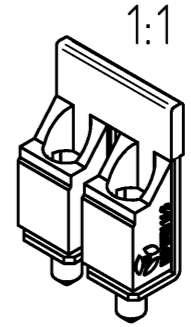
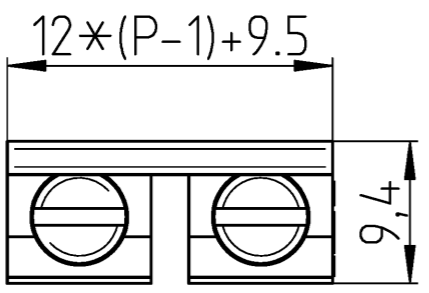
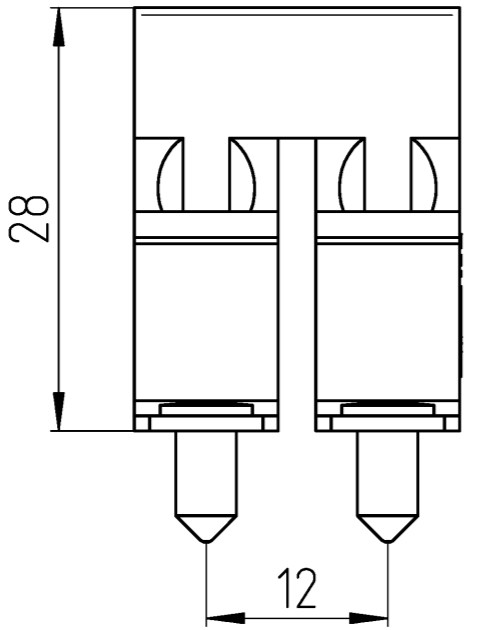
REACH-SVHC conformity status	compliant
------------------------------	-----------

A  
 © Alle Rechte vorbehalten  
 © All rights reserved  
 Vertraulich  
 Confidentiality Class.

B  
 These dimensions will be especially checked at delivery  
 Only inspection dimensions  
 With /E marked dimensions are only valid for internal use.

C  
 Diese Maße werden bei Abnahme besonders geprüft  
 Ausschließlich Prüfmaße  
 Mit /E gekennzeichnete Maße sind nur für interne Zwecke gültig.

F



Bestell-Nr. /order no.	Polzahl P /number of pole P	Typ /type	Farbe /colour
0D.S18.3227.0	2	IVB WTN 16-2 S	grau / grey
0D.S18.3327.0	3	IVB WTN 16-3 S	grau / grey
0D.S18.3427.0	4	IVB WTN 16-4 S	grau / grey
0D.S18.3527.0	5	IVB WTN 16-5 S	grau / grey
0D.S18.3627.0	6	IVB WTN 16-6 S	grau / grey
0D.S18.3727.0	7	IVB WTN 16-7 S	grau / grey
0D.S18.3827.0	8	IVB WTN 16-8 S	grau / grey
0D.S18.3927.0	9	IVB WTN 16-9 S	grau / grey
0D.S18.4027.0	10	IVB WTN 16-10 S	grau / grey

Weitere Daten siehe KATALOG oder eKatalog  
 additional data see CATALOG or eCATALOG  
[www.wieland-electric.com](http://www.wieland-electric.com)  
[eshop.wieland-electric.com](http://eshop.wieland-electric.com)

Tolerierung Size ISO 14405 © / Tolerance system Size ISO 14405 ©.  
 (This ISO-standard describes the envelope principle. According to the envelope principle the deviations of form and parallelism are limited by the size tolerances).  
 ja/yes  Stoffverbots- und Deklarationsliste nach WN 5020.010 ist einzuhalten.  
 Conformity with Wieland document WN 5020.010 e (list of prohibited / declarable hazardous substances) to be declared!

Freitoleranz nach General tolerance CAD - Zeichnung, keine manuellen Änderungen CAD - drawing, no manual modifications allowed 1. Verwendung: First Use: Blatt: 1 von 1 Sheet: 1 of 1

Werkstoff / Material	Tag/Date	Name	Zeichnung Nr. / Drawing No.	Index
	gezeichnet drawn	Eichhorn N.		
Maßstab / Scale	Elektronische Freigabe Electronic Release		T 0D.S18.3227.0 13K	Maße in mm / Dimensions are in mm
2:1	Ersatz für / Replacement for:			
Vol. mm <sup>3</sup> / Of. / Srf. mm <sup>2</sup>	Type	Benennung/Title		
			<b>VERBINDUNGSSTEG</b> jumper bar	
Index Datum / Blatt Date / Sheet				
Änderung / Revision				